



**Premier  
Properties**  
Perth



## 45/1 North Methven Street, Perth, PH1 5PX

**Offers over £67,000**



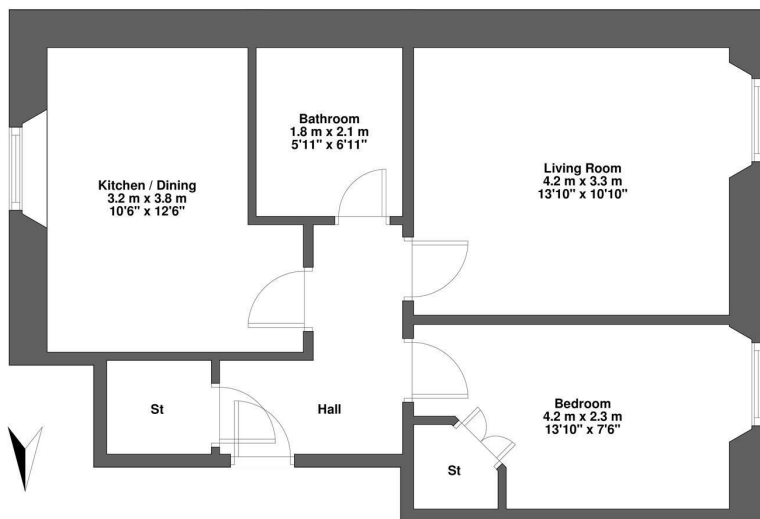
Accommodation comprises: **FIRST FLOOR:** Entrance hall, lounge, bedroom, kitchen/dining area and bathroom (with WC).

**Location:** The property has a superb location near the North Inch parklands and is just a stone's throw away from local cafes, shops, restaurants, the Theatre and Concert Hall. It is situated in an ideal location for those commuting to Dundee, Pitlochry, Inverness, Edinburgh, Glasgow and Aberdeen with the road links, train and bus stations all close by.

- First Floor Flat
- City Centre Location
- One Bedroom
- Tastefully Decorated
- Dining Kitchen
- \*\*\*Home Report Values at £75,000\*\*\*
- Ideal Investment Opportunity
- Close to North Inch Parklands
- On Street Parking
- Gas Central heating

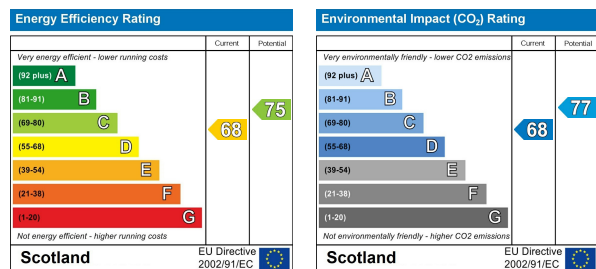






Flat 1, 45 North Methven Street, Perth, PH1 5PX

Plan not to scale.  
For illustrative purposes only.



These particulars, whilst believed to be accurate are set out as a general outline only for guidance and do not constitute any part of an offer or contract. Intending purchasers should not rely on them as statements of representation of fact, but must satisfy themselves by inspection or otherwise as to their accuracy. No person in this firm's employment has the authority to make or give any representation or warranty in respect of the property.